



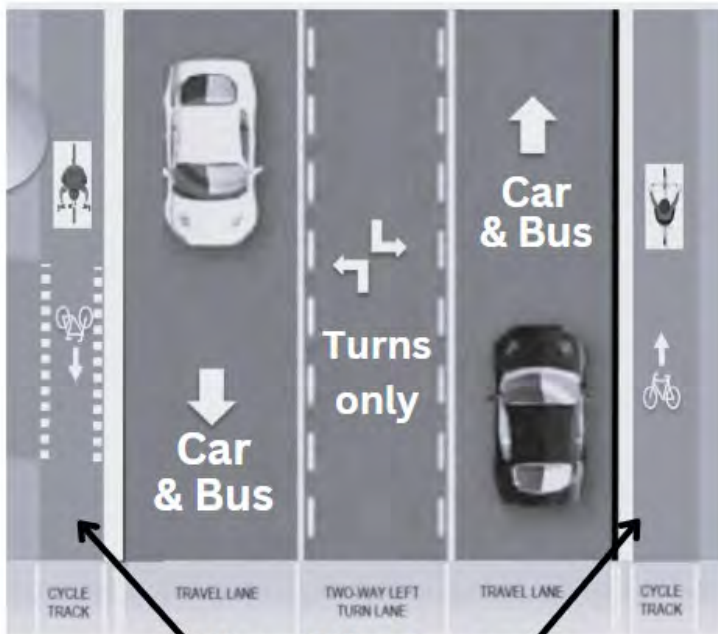
SAVE BLOOR!

Mississauga City Council voted to

REDUCE BLOOR STREET TO 1 CAR LANE EACH DIRECTION

Alternative 6

Central Parkway to Etobicoke border



New Bike Lanes

CONCERNS

- Greater traffic congestion
- Emergency vehicle delays
- Service vehicle delays (Ex. garbage trucks/deliveries)
- Loss of trees & greenspace
- Longer trip times & more idling equals more pollution
- Increased traffic to neighbouring streets
- Increase in traffic from new developments
- Safety issues

Visit **SAVE BLOOR** webpage at www.ApplewoodHHRA.com for more information and to sign the petition.

Take the **BLOOR STREET SURVEY!**

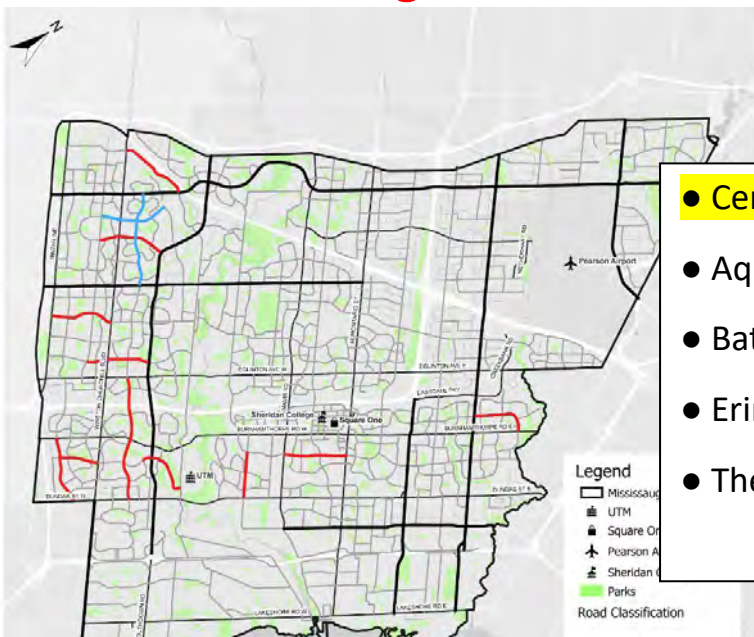
<https://tinyurl.com/SaveBloorSt>

or SCAN



BLOOR STREET is the TEST!

10 other Mississauga Streets to be changed to a “road diet”.



Potential Road Diet Locations

Mississauga's road network was reviewed to identify locations where a road diet could be considered. Ideal candidate corridors provide access to adjacent lands, served community uses, and have high potential for pedestrian and cyclist activity.

- Central Parkway
- Aquitaine Avenue
- Battleford Road
- Erindale Station Rd
- The Collegeway
- Rathburn Road
- Argentia Road
- Erin Centre Blvd
- Ridgeway Drive
- Thomas Street